



In the morning 7:00, the column of people waiting for the order of the acceptance has continued for several tens of meters.







Hall is full of people at the entrance in the auditorium of the public schools.

The hall, cooling also fan does not have any electricity.

Temperature 35 °C, 70% humidity.

Activities will start from 7 am.





In the hall is anyway hot.  
Sweat will flow like a  
waterfall from the face.





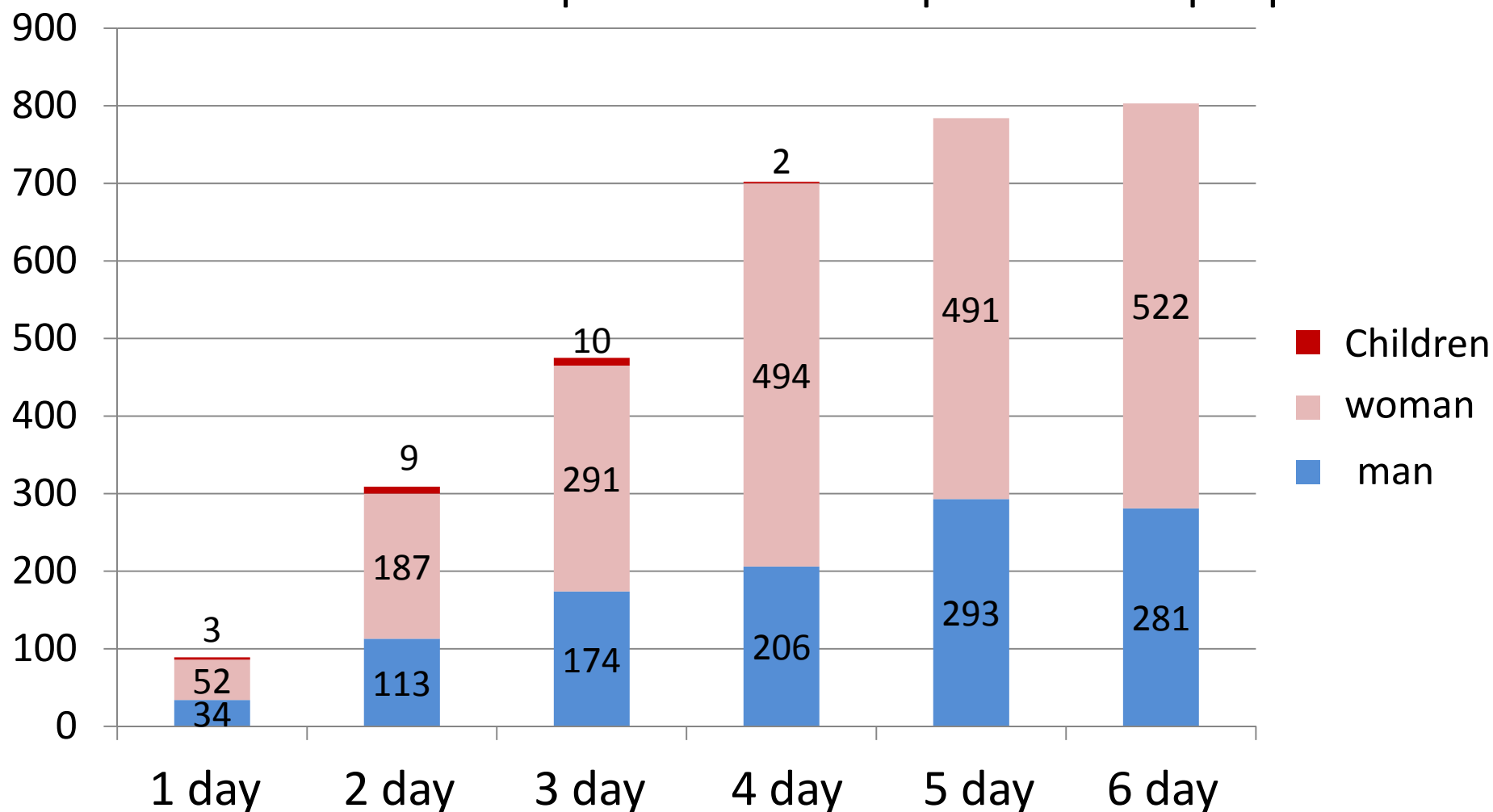


Students and students of the nursing school has helped me as a volunteer.

# Health Camp in Nepal, Lumbini

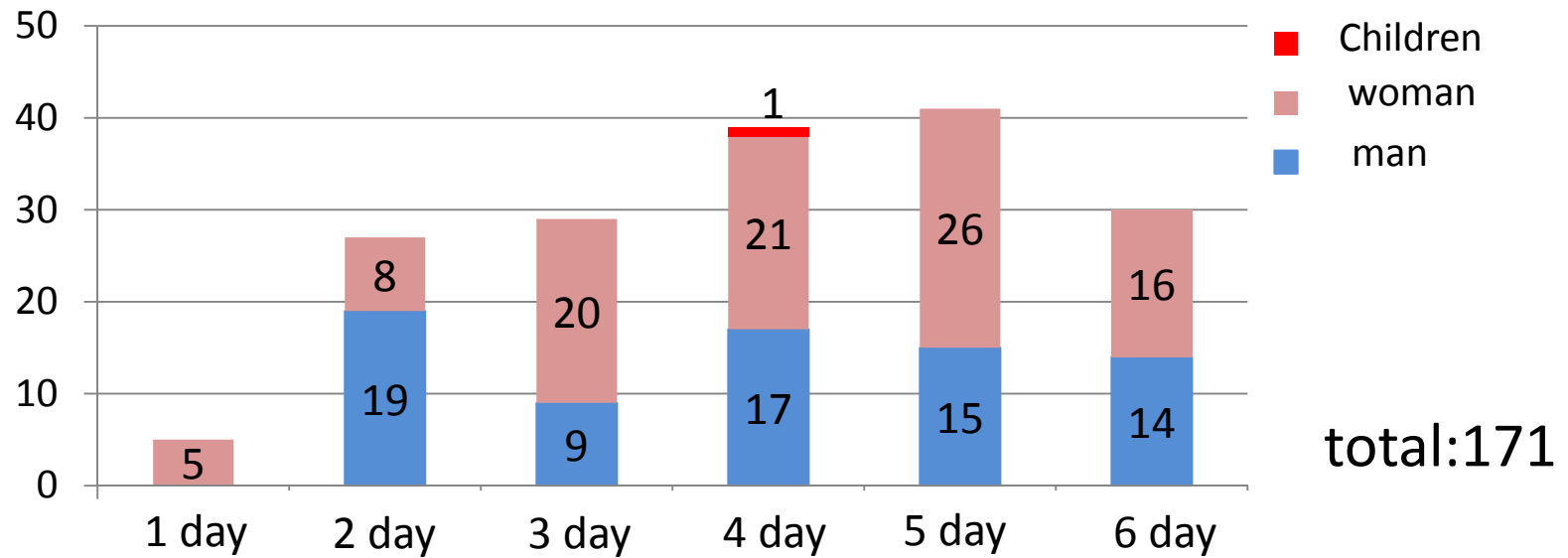
August 12 to August 18, 2016

The total number of patients with acupuncture 20 people

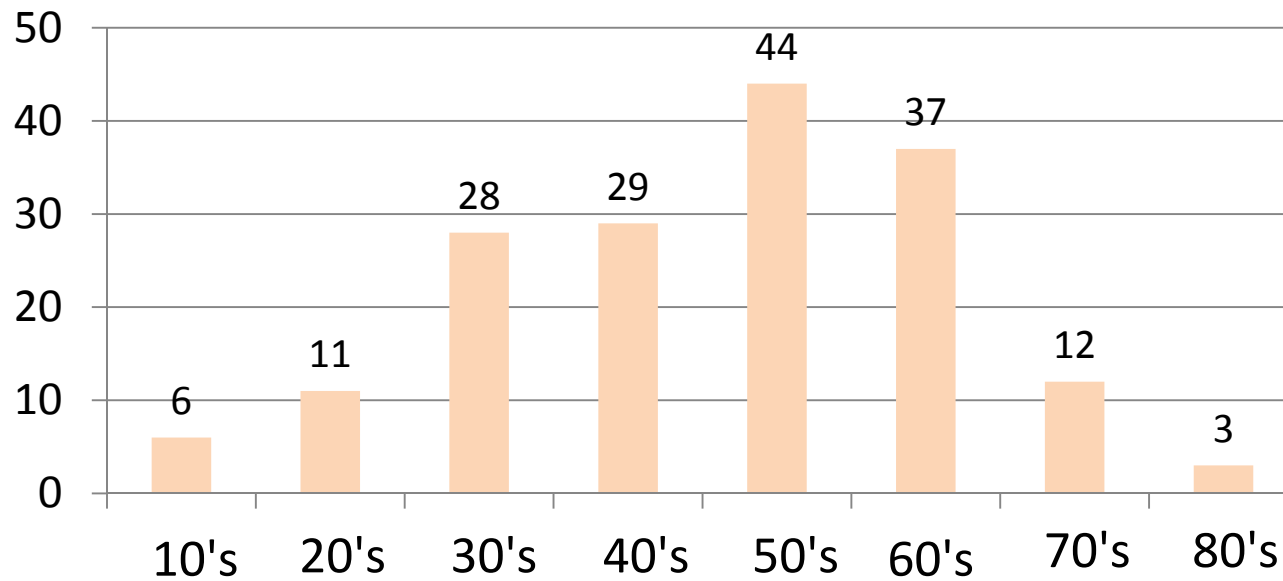


Patients total:3,162

## Individual in charge of Patients



## Patient age distribution



# main complaint

Neck pain

Shoulder pain

Upper extremity

numbness

Upper extremity pain

Elbow pain

Teyubitsu

Anterior chest pain

Back pain

stomach ache

Low back pain

Buttock pain

Sacral pain

Meralgia

Leg pain

Pain in knee

Pain of knee

back

Calf abdominal

pain

Plantar edge

pain

Plantar pain

Heel pain

headache

Sore eyes

cough

Menstrual pain

General pain

Hemiplegia

Acne face